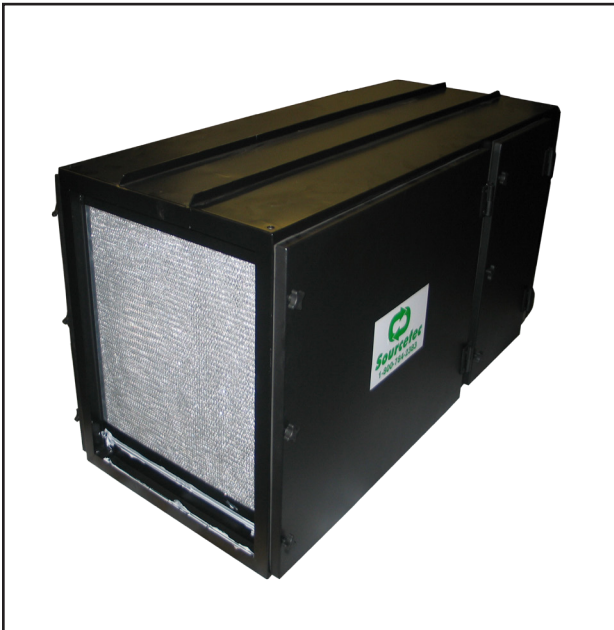




The future is clean air ... the future is **Sourcetek**®

SM Filter Unit



GENERAL DESCRIPTION

The Sourcetek filtration models series SM are specially designed to be wall mounted or ceiling hung in work places where air filtration and recycling is a must. If necessary, the SM unit can also be floor mounted. Sourcetek filter module is available in various sizes, to ensure that all harmful contaminants such as fumes, dust, and gases are captured from the workplace and retained in the unit for disposal, ensuring the recycled or discharged air is well below OSHA standards. The SM filter unit can be used for general ventilation or can be mounted in conjunction with our Sourcearms® to provide source capture, an efficient and economical way to control in-plant pollution. The source capture method allows only contaminated air in a given space to be cleaned and recycled, thus providing substantial savings on heating bills, maintenance, etc.

TECHNICAL DESCRIPTION

We have selected three stages of filtration as standard to suit most applications. The manufacturing of our industrial equipment is based on the non-electronic principle of air filtration, which, in certain areas, out performs conventional electronic systems; therefore, no plating, arcing, nor ozone are generated from the cleaning operation.

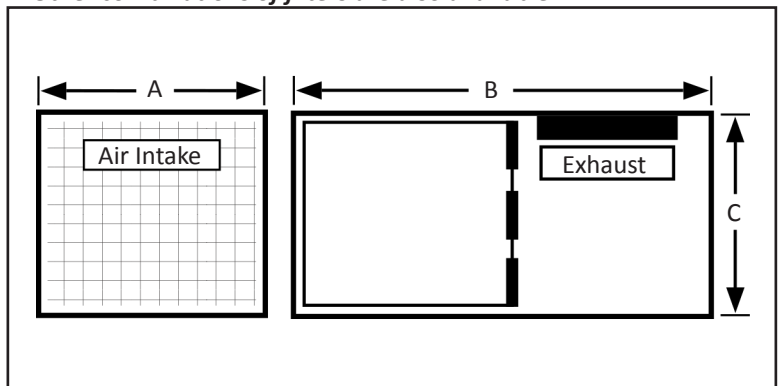
STANDARD SPECIFICATIONS

- **First stage of filtration:** Washable filter to remove large particulates, and sparks from the air stream.
- **Second stage of filtration:** Throwaway filter, captures particles up to 5 microns.
- **Third stage of filtration:** Hi-efficiency filter to remove small particles and contaminants from the air. Efficiency 90% at 1 micron.

CONSTRUCTION

Our unit is made of 16 GA heavy-duty fully welded steel. SM unit is equipped with four heavy-duty eyebolts for ceiling mount, access door panel with heavy-duty hinges, and a removable back panel for wiring and accessing the fan unit. Special Sourcetek powder coat finish for atmospheric protection is also provided.

**Other combinations of filters are also available*



ACCESSORIES

1. HEPA Filter Model # H: For HEPA when high efficiency is required, a HEPA filter can be added for a fourth stage filtration system.
2. GAS Filter Model # G: Used to remove odours or gases from most industrial processes. Uses activated carbon as a filter (size may vary with concentration).
3. PLENUM Model # PL1, PL2, PL3: A plenum is used when source capture is required. One, two, or three arms can be attached to one unit (some restrictions may apply).

TECHNICAL DATA

MODEL*	AIR FLOW (CFM)	MOTOR HP	VOLTAGE	DIMENSIONS*
SM-1200	1200	1.00	110/1/60	635 mm (25") X 1,500 mm (59") X 711 mm (28") H
SM-2500	2500	5.00	575/3/60	812 mm (31") X 1,524 mm (60") X 711 mm (28") H
SM-4000	4000	7-1/2	575/3/60	1,245 mm (49") X 1,524 mm (60") X 711 mm (28") H

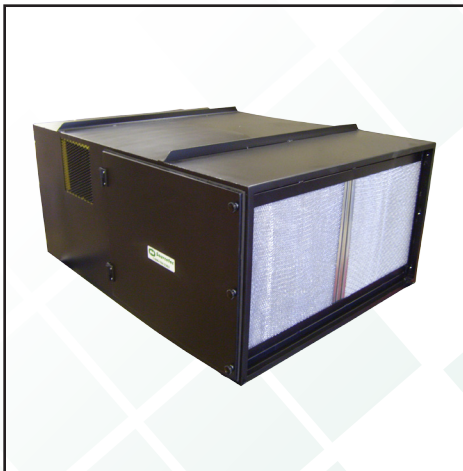
*Dimensions does not include gas filter

*For options, select the suffix to the specified model. Other voltages are also available upon request.

*Other combinations of fans are also available

*With our continued commitment to product improvement, we reserve the right to change products and specifications without notice

PHOTOS



Distributed by:



The future is clean air ... the future is Sourcetec®

We reserve the right to change specifications without notice.

Sourcetec Industries Inc.

Ontario, Canada

Tel: (905) 678-9333 Fax: (905) 678-7133

Ohio, USA

1-800-784-2383

www.sourcetecindustries.com

E-mail: sales@sourcetecindustries.com

B-SM 01/18